



*Brinkhaus*

INNOVATIVE  
SLEEPING CULTURE  
SINCE 1847

Home & Yacht Linens and Interiors.  
[www.finestbedlinen.com](http://www.finestbedlinen.com)



*The success story that is BRINKHAUS, a company full of tradition, began in Warendorf, Germany, in 1847. A lot has happened since then. We now face new markets, new requirements and new challenges. But we have dealt with it all in a flexible, innovative way – without compromising our proven BRINKHAUS quality.*

*BRINKHAUS products are manufactured in accordance with the latest production developments and techniques – and, of course, in accordance with the customer's requirements and wishes. We purchase high-quality materials and fillings from all over the world for use in our products.*

*Today, the BRINKHAUS brand stands for the very highest quality in over 40 countries around the world.*



Home & Yacht Linens and Interiors.  
[www.finestbedlinen.com](http://www.finestbedlinen.com)





**Brinkhaus**

## TABLE OF CONTENTS



### **DOWN AND FEATHERS**

06	Carat
08	Topas
10	Sapphire
12	Multiple Option
14	For All Seasons
16	Twin Topper



### **NATURAL HAIR AND FIBRE**

20	Tibet
20	Mahdi
21	Mandarin
22	Exquisit
24	Morpheus®



### **TEXTILE FIBRE**

30	Climasoft® with Outlast®
32	Bauschi® Lux



### **PILLOWS**

36	Sapphire
36	Jade
36	Premier Hungarian Goose Down
38	Luxury Twin
38	Down Surround
40	Everyday Pillows and Cushions
42	Exquisit
42	Morpheus®
42	Climasoft® with Outlast®
43	Bauschi® Lux
43	Gel

### **SPECIALS**

24	Information for people suffering from house dust mite allergies
44	Certificates
44	Seals of Quality
46	Quality Index



# DOWN AND FEATHERS

*...envelop you softly and gently because we only select  
the best down for our products. Especially cosy,  
it has heat-insulating and temperature-regulating  
effects unlike hardly any other material.*

*Perfect for high standards – and for you!*

Home & Yacht Linens and Interiors:  
[www.finestbedlinen.com](http://www.finestbedlinen.com)





Home & Yacht Linens and Interiors.  
[www.finestbedlinen.com](http://www.finestbedlinen.com)

# CARAT

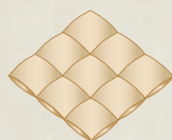


## THE GOOSE DOWN DUVET

A first-class modern and flexible duvet system – for individual solutions. The system: three excellent duvets, the CARAT light, medium and warm, with a filling of 100 % Masurian goose down and the finest cover of Egyptian long staple cotton. All duvets can be purchased separately or in pairs, they can be used separately or be combined later in many different ways. All duvets have a unique buttonhole system. Start with the light duvet for summertime – for colder nights, one partner can add the medium duvet and the other can use the warmer duvet. It's up to you.

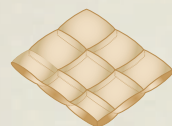
### SPECIFICATIONS

Casing	ultra-fine 100 % Egyptian long staple cotton batiste, medicott® treated, downproof, TC 325
Filling	new white Masurian goose down, class I, DIN EN 12934, 100 % down
Design	with satin piping and detachable buttons
Washable	up to 60 °C
Colour	white



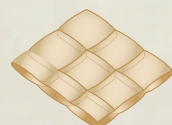
**BOX STITCH DUVET 4.5 TOG MEDIUM LIGHT**  
BOX CONSTRUCTION, BASIS 8 X 10 SQUARES  
APPROX. 90 G/M<sup>2</sup>

Product Code	Size in cm	Filling Weight
28443	135 x 200	240 g
28444	155 x 200*	290 g
28445	155 x 220*	320 g
28446	200 x 200	370 g
28447	200 x 220*	400 g
28448	230 x 220	470 g
28449	240 x 220*	500 g
28450	260 x 220	550 g



**CASSETTE DUVET 9.5 TOG WARM**  
CASSETTE CONSTRUCTION, BASIS 5 X 7 SQUARES  
APPROX. 165 G/M<sup>2</sup>

Product Code	Size in cm	Filling Weight
28451	135 x 200	450 g
28452	155 x 200*	520 g
28453	155 x 220*	580 g
28454	200 x 200	680 g
28455	200 x 220*	740 g
28456	230 x 220	850 g
28457	240 x 220*	890 g
28458	260 x 220	970 g



**CASSETTE DUVET 12.0 TOG EXTRA WARM**  
CASSETTE CONSTRUCTION, BASIS 4 X 6 SQUARES  
APPROX. 220 G/M<sup>2</sup>

Product Code	Size in cm	Filling Weight
28459	135 x 200	600 g
28460	155 x 200*	690 g
28461	155 x 220*	770 g
28462	200 x 200	900 g
28463	200 x 220*	990 g
28464	230 x 220	1,140 g
28465	240 x 220*	1,170 g
28466	260 x 220	1,290 g

### THE DETACHABLE BUTTON SYSTEM



to combine the duvets





Home & Yacht Linens and Interiors  
[www.finestbedlinen.com](http://www.finestbedlinen.com)

THE CARAT GOOSE DOWN DUVETS



# TOPAS



## THE GOOSE DOWN DUVET

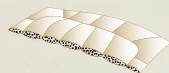
These high quality duvets combine a filling of Masurian goose down and feathers with a casing of finest down-proof maco-batiste. This combination assures wonderful sleep and offers cosy warmth without weight. Thanks to an extra treatment, the casing is extremely soft with a velvety feel. The cosy body zone quilting, precise corners and a first-rate filling mean exceptional sleeping comfort.

## THE BODY ZONE STITCHING

Thanks to the body zone stitching, the duvet drapes ideally around the body thus forming a cocoon with a pleasant sleeping climate and the highest comfort. The stitching follows the body's contours thus making a cocoon with constant heat retention. Ideal warmth distribution is assured – especially around the shoulders and feet. A quilted edging rim closes the duvet from the ambient air. Duvets with body zone stitching and a quilted edging rim assure great and recuperative sleep as well as a pleasantly dry sleeping climate with great heat retention.

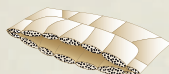
## SPECIFICATIONS

Casing	finest 100 % Egyptian long staple cotton batiste, with peach skin finishing, medicott® treated, downproof, TC 320
Filling	new white Masurian goose down, class I, DIN EN 12934, 90 % down
Design	with edging band, tailor-made corner
Washable	up to 60 °C
Colour	white



**BODY STITCH DUVET 3.5 TOG LIGHT**  
**BODY ZONE STITCHING**  
 APPROX. 85 G/M<sup>2</sup>

Product Code	Size in cm	Filling Weight
28467	135 x 200	230 g
28468	155 x 200*	270 g
28469	155 x 220*	290 g
28470	200 x 200	340 g
28471	200 x 220*	380 g
28472	230 x 220	430 g
28473	240 x 220*	450 g
28474	260 x 220	490 g



**BODY STITCH DUAL DUVET 9.0 TOG WARM**  
**BODY ZONE STITCHING, DUAL CONSTRUCTION**  
 APPROX. 2 X 85 G/M<sup>2</sup>

28475	135 x 200	2 x 230 g
28476	155 x 200*	2 x 270 g
28477	155 x 220*	2 x 290 g
28478	200 x 200	2 x 340 g
28479	200 x 220*	2 x 380 g
28480	230 x 220	2 x 430 g
28481	240 x 220*	2 x 450 g
28482	260 x 220	2 x 490 g





TOPAS GOOSE DOWN DUVET MEDIUM WARM

# SAPPHIRE



## THE GOOSE DOWN DUVET AND PILLOW

A special contemporary style for those with high standards for sleeping comfort.

### THE DUVET

The intricate hand-made construction of square boxes in the center using finest quality batiste holds the prime Hungarian down in position in the most important zone of the duvet. The sumptuous rim divided at strategic spots and filled to perfection, gives superb drape around the body for luxurious warmth. An imposing piece of modern duvet design made with skill and care for exceptional comfort.

### THE PILLOW

Designed to be a partner to the already successful SAPPHIRE down duvet this special pillow has a unique design and stitching pattern. It has three separate chambers which run along the length of the pillow, one at the top edge, one at the bottom and a central wider section. The outer edge chambers are packed firmly to give edge support for shoulder or neck while the central chamber offers the exceptional softness and comfort of best quality free-range down.

### SPECIFICATIONS

Casing	Duvet	finest 100 % Egyptian long staple cotton batiste, medicott® treated, downproof, TC 305
	Pillow	fine 100 % Egyptian long staple cotton twill, medicott® treated, downproof, TC 234
Filling	new white superior Hungarian goose down, class I, DIN EN 12934	
	Duvet	90 % down
	Pillow	80 % down
Design	with satin piping	
Washable	up to 60 °C	
Colour	white	



#### BOX STITCH DUVET 11.5 TOG WARM

STITCHING: 3 X 6 BOXES IN CENTRE, WITH OUTER RIM  
APPROX. 290 G/M<sup>2</sup>

Product Code	Size in cm	Filling Weight
24962	135 x 200	790 g
24967	155 x 200*	920 g
24968	155 x 220*	990 g
24963	200 x 200	1,170 g
24969	200 x 220*	1,280 g
24964	230 x 220	1,480 g
24970	240 x 220*	1,540 g
24965	260 x 220	1,670 g
24966	300 x 240*	2,100 g



#### COMFORT PILLOW FIRM WITH 2 INNER BAFFLES

28260	50 x 75	800 g
28261	50 x 90	1,000 g
28241	50 x 70*	730 g





Home & Yacht Linens and Interiors.  
[www.finestbedlinen.com](http://www.finestbedlinen.com)

## MULTIPLE OPTION



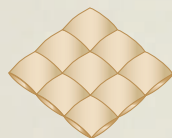
### THE GOOSE DOWN DUVET

The system: Four exquisite duvets, the OPAL, the CRYSTAL, the PEARL and the GEM, all have premier Hungarian goose down filling and the finest casings. Each of the duvets can be purchased separately, or in pairs, used separately or later combined in up to ten different ways. The four duvets each have a unique system of strong, lightweight stainless nickel-free metal press studs. You purchase any of the duvets that you need now, and then add to it at a later stage, if required, by joining together any combination of two. If, or when, you feel the need to add to your duvet, as the seasons change, this system gives the complete solution to suit your individual needs and puts you in control.

It is no surprise that these products have been near the top of our sales league for many years. They represent great value for money and combine modern technology and BRINKHAUS craftsmanship beautifully.

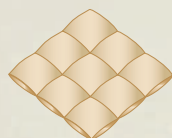
### SPECIFICATIONS

Casing	finest 100 % Egyptian long staple cotton batiste, medicott® treated, downproof, TC 305
Filling	new white superior Hungarian goose down, class I, DIN EN 12934, 90 % down
Design	with nickel-free metal press studs
Washable	up to 60 °C
Colour	white



**OPAL BOX STITCH DUVET 2.5 TOG ULTRA LIGHT**  
BOX STITCHING, BASIS 8 X 10 SQUARES  
APPROX. 55 G/M<sup>2</sup>

Product Code	Size in cm	Filling Weight
22032	135 x 200	150 g
22033	135 x 220*	165 g
22090	155 x 200*	170 g
22091	155 x 220*	190 g
22094	200 x 200	220 g
22089	200 x 220*	245 g
22095	230 x 220	280 g
22283	240 x 220*	290 g
22096	260 x 220	320 g
22325	280 x 235*	370 g
22326	300 x 240*	400 g

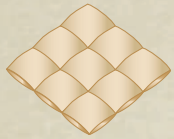


**CRYSTAL BOX STITCH DUVET 4.0 TOG LIGHT**  
BOX STITCHING, BASIS 8 X 10 SQUARES  
APPROX. 95 G/M<sup>2</sup>

Product Code	Size in cm	Filling Weight
24053	135 x 200	250 g
24054	135 x 220*	275 g
22088	155 x 200*	295 g
22087	155 x 220*	320 g
24055	200 x 200	370 g
22086	200 x 220*	410 g
24057	230 x 220	470 g
22284	240 x 220*	490 g
24058	260 x 220	550 g
24220	280 x 235*	630 g
24244	300 x 240*	690 g

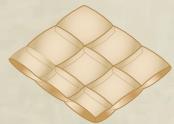


## MULTIPLE OPTION



**PEARL BOX STITCH DUVET** 8.0 TOG MEDIUM  
BOX STITCHING, BASIS 6 X 8 SQUARES  
APPROX. 165 G/M<sup>2</sup>

Product	Product Code	Size in cm	Filling Weight
	24059	135 x 200	450 g
	24060	135 x 220*	500 g
	22085	155 x 200*	520 g
	22084	155 x 220*	570 g
	24061	200 x 200	670 g
	24062	200 x 220*	740 g
	24063	230 x 220	840 g
	24056	240 x 220*	870 g
	24064	260 x 220	950 g
	24221	280 x 235*	1,100 g
	24245	300 x 240*	1,200 g



**GEM CASSETTE DUVET** 10.5 TOG WARM  
CASSETTE CONSTRUCTION, BASIS 5 X 7 SQUARES  
APPROX. 220 G/M<sup>2</sup>

	24065	135 x 200	600 g
	24066	135 x 220*	665 g
	22081	155 x 200*	690 g
	22082	155 x 220*	760 g
	24067	200 x 200	880 g
	22083	200 x 220*	970 g
	24069	230 x 220	1,125 g
	24068	240 x 220*	1,170 g
	24070	260 x 220	1,260 g
	24222	280 x 235*	1,450 g
	24233	300 x 240*	1,600 g



## FOR ALL SEASONS

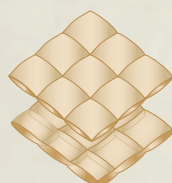


### THE GOOSE DOWN DUVET

This classical, highly versatile combination of three duvets in one has been developed over the years for ultimate sleeping comfort. The lighter duvet for summer, heavier weight for autumn and, by joining them together with the strong, lightweight, stainless nickel-free metal press studs, for full extra warmth on those cold winter nights. Using top grade white European goose down from the best sources in Europe provides loft for insulation and lightness for freedom and comfort. Both of these duvets are encased in a superb, top-quality, fine-combed Egyptian long staple cotton.

### SPECIFICATIONS

Casing	fine 100 % Egyptian long staple cotton cambric, medicott® treated, downproof, TC 270
Filling	new white European goose down, class I, DIN EN 12934, 80 % down
Design	with nickel-free metal press studs
Washable	up to 60 °C
Colour	white



Product	Product Code	Size in cm	Filling Weight
<b>BOX STITCH DUVET</b>	24416	135 x 200	250 + 450 g
4.5 TOG LIGHT	20170	155 x 200*	290 + 520 g
BOX STITCHING, BASIS 8 X 10 SQUARES	24415	155 x 220*	320 + 570 g
APPROX. 95 G/M <sup>2</sup>	24417	200 x 200	370 + 680 g
	24420	200 x 220*	410 + 740 g
8.0 TOG MEDIUM	24418	230 x 220	470 + 830 g
BOX STITCHING, BASIS 5 X 7 SQUARES	24414	240 x 220*	490 + 880 g
APPROX. 165 G/M <sup>2</sup>	24419	260 x 220	530 + 970 g
	20151	300 x 240*	670 + 1,220 g
COMBINED 12.5 TOG EXTRA WARM			





Home & Yacht Linens and Interiors.  
[www.finestbedlinen.com](http://www.finestbedlinen.com)



# TWIN TOPPER



## THE MATTRESS TOPPER

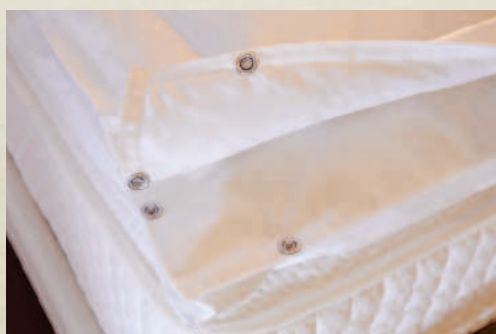
Imagine the end of a hard day at work or after a long journey, drenched in tiredness and aching to relax. It comes to the time to take rest, just sink into a cloud, cosseted in high-quality new white goose down, floating, drifting to restful sleep. This is a whole new experience in loose cover bedding that goes beneath the fitted sheet. It comes in two separate parts, the bottom layer filled with feathers and down, held onto the mattress by strong, wide elastic straps and the washable detachable top layer of finest quality soft new white European goose down, the whole rests on top of the mattress adding some 8 cm of luxurious comfort. It envelops you in an enticing invitation to sleep. The TWIN TOPPER will become part of life's natural, luxurious comforts and pleasures.

## SPECIFICATIONS

Casing	fine 100 % Egyptian long staple cotton twill, medicott® treated
	top layer downproof, TC 234
	bottom layer down- / featherproof, TC 198
Filling	top layer new white European goose down, class I, DIN EN 12934, 90 % down
	bottom layer new white European duck feathers and down, class I, DIN EN 12934, 85 % feathers / 15 % down
Design	top layer box stitching, equipped with durable nickel-free metal press studs
	bottom layer cassette construction with outer baffle, equipped with elastic corner straps
Washable	top layer up to 60 °C
Colour	white

Product	Product Code	Size in cm	Filling Weight
<b>MATTRESS TOPPER</b>	29542	90 x 200	300 + 2,000 g
	29543	140 x 200	460 + 3,110 g
	29544	150 x 200	500 + 3,330 g
	29547	160 x 200	540 + 3,560 g
	29545	180 x 200	600 + 4,000 g
	29546	200 x 200	670 + 4,440 g

## THE TWIN CONSTRUCTION



for softness and support

## THE ELASTIC CORNER STRAP



for a better hold on the mattress





Home & Yacht Linens and Interiors.  
[www.finestbedlinen.com](http://www.finestbedlinen.com)



# NATURAL HAIR AND FIBRE

*Only the most exclusive, finest and precious natural hair:  
especially light and cosy, with well-balanced moisture  
management and heat retention. The perfect material  
for everyone who would like to experience  
the original feeling of nature!*

Home & Yacht Liners and Interiors  
[www.finestbedlinen.com](http://www.finestbedlinen.com)





Home & Yacht Linens and Interiors.  
[www.finestbedlinen.com](http://www.finestbedlinen.com)



## TIBET



### THE CASHMERE-FILLED DUVET

Combining lightness and warmth with luxurious drape, the TIBET cashmere-filled duvet is the ultimate alternative filling for those who do not want synthetics or down. Using the down equivalent, i. e. the soft fine undercoat hair of the Cashmere goat, we have created a highly absorbent luxurious filling offering outstanding heat retention and exceptional comfort.

#### SPECIFICATIONS

Casing	finest satin in 100 % Egyptian long staple cotton, medicott® treated, TC 380
Filling	100 % pure cashmere
Design	equipped with durable nickel-free metal press studs
Washable	professional dry-cleaning
Colour	white



Product	Product Code	Size in cm	Filling Weight
<b>CASHMERE-FILLED DUVET 3.5 TOG LIGHT</b>	79940	135 x 200	600 g
<b>CIRCLE QUILTING WITH RIM</b>	79901	155 x 200*	690 g
<b>APPROX. 220 G/M²</b>	79906	155 x 220*	760 g
	79941	200 x 200	900 g
	79908	200 x 220*	990 g
	79942	230 x 220	1,120 g
	79911	240 x 220*	1,170 g
	79943	260 x 220	1,270 g

## MAHDI

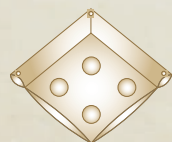


### THE CAMEL HAIR-FILLED DUVET

Only the finest undercoat is used to manufacture the filling in these high-class camel hair duvets. Camel hair fleece assures silkiness and cosiness. The hair offers a high filling volume. Refined fine satin in 100 % Egyptian long staple cotton envelops the high-class filling. The light version is the ideal duvet for warm summer nights and the four seasons combination duvet is perfect for the cold season.

#### SPECIFICATIONS

Casing	finest satin in 100 % Egyptian long staple cotton, medicott® treated, TC 380
Filling	100 % pure camel hair
Design	circle quilting with rim, equipped with durable nickel-free metal press studs
Washable	professional dry-cleaning
Colour	white



Product	Product Code	Size in cm	Filling Weight
<b>CAMEL HAIR-FILLED DUVET 3.5 TOG LIGHT</b>	57801	135 x 200	600 g
<b>CIRCLE QUILTING WITH RIM</b>	57802	155 x 200*	690 g
<b>APPROX. 220 G/M²</b>	57803	155 x 220*	760 g
	57804	200 x 200	900 g
	57805	200 x 220*	990 g
	57806	230 x 220	1,120 g
	57807	240 x 220*	1,170 g
	57808	260 x 220	1,270 g



# MANDARIN

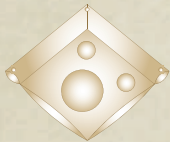


## THE SILK-FILLED DUVET

Surrounded by elegant silk at all times for a special aura. Silk acts as a temperature balance and moisture regulator for a pleasant sleeping environment. Manufactured from MANDARIN tussah silk, the duvets with sheer tussah silk have a light and cool feel. In conjunction with a casing made of fine Egyptian long staple cotton satin, it makes the ideal summer bedding and also covers optimum heat requirements throughout the year. Sleeping comfort is perfectly assured thanks to the snug stitching and high-class filling.

## SPECIFICATIONS

Casing	fine satin in 100 % Egyptian long staple cotton, medicott® treated, TC 218
Filling	100 % pure silk
Design	equipped with durable nickel-free metal press studs
Washable	professional dry-cleaning
Colour	white



Product	Product Code	Size in cm	Filling Weight
<b>SILK-FILLED DUVET 3.5 TOG LIGHT</b>	59952	135 x 200	700 g
<b>CIRCLE QUILTING WITH RIM</b>	59913	155 x 200*	800 g
<b>APPROX. 260 G/M²</b>	59914	155 x 220*	880 g
	59954	200 x 200	1,050 g
	59915	200 x 220*	1,150 g
	59955	230 x 220	1,300 g
	59916	240 x 220*	1,350 g
	59956	260 x 220	1,450 g



# EXQUISIT



## THE WOOL-FILLED COLLECTION

For thousands of years wool has been known for its resilience and durability, it is soft, yet naturally springy and offers warmth and extremely high moisture absorbency, it is able to absorb up to 30 % of its own weight in moisture before feeling damp.

### THE DUVET

Wool protects against heat and cold. Its strong curl makes it possible to retain a large quantity of air. Without this curl, the insulating effect would not be achieved. This guarantees a constant temperature allowing the body to remain warm and dry while sleeping. The BRINKHAUS fine maco satin cover is both flexible and beautiful allowing air to pleasantly circulate around the body. Thanks to these features and its great thermal insulation, this sheep wool duvet is a well-earned luxury for many people.

### THE MATTRESS PAD

Wool is the ideal filling to use as a comfortable, loose cover topper, especially for those who seek extra relief from aches and pains at night. It gives comfort, warmth and additional moisture protection to the mattress underneath. The EXQUISIT mattress pad has a casing of fine Egyptian long staple cotton satin and is held on the top of the mattress with strong, wide elastic corner straps.

### SPECIFICATIONS

Casing	fine satin in 100 % Egyptian long staple cotton, medicott® treated, TC 218		
Filling	100 % pure new wool		
	Pillow	100 % pure new wool balls	
Design	Duvet	equipped with durable nickel-free metal press studs	
	Mattress Pad	equipped with elastic corner straps	
	Pillow	quilted outer cover with zipper, PP non-woven inner pillow with zipper	
Washable	up to 40 °C		
Colour	white		



Product	Product Code	Size in cm	Filling Weight
<b>WOOL-FILLED DUVET 5.5 TOC MEDIUM</b>	50601	135 x 200	950 g
<b>SQUARE QUILTING WITH RIM</b>	50602	155 x 200*	1,090 g
<b>APPROX. 350 G/M²</b>	50603	155 x 220*	1,200 g
	50604	200 x 200	1,400 g
	50605	200 x 220*	1,540 g
	50606	230 x 220	1,770 g
	50607	240 x 220*	1,850 g
	50608	260 x 220	2,000 g
<b>WOOL-FILLED MATTRESS PAD</b>	50956	90 x 190	1,500 g
<b>SQUARE QUILTING WITH RIM</b>	50987	90 x 200*	1,600 g
<b>APPROX. 890 G/M²</b>	50988	120 x 200*	2,100 g
	50957	140 x 190	2,400 g
	50958	150 x 200	2,700 g
	50989	160 x 200*	2,880 g
	50959	180 x 200	3,200 g
	50967	200 x 200	3,500 g
<b>WOOL-FILLED PILLOW MEDIUM</b>	56771	50 x 75	850 g
	56772	50 x 70*	800 g
	56773	65 x 65*	950 g





Home & Yacht Linens and Interiors.  
[www.finestbedlinen.com](http://www.finestbedlinen.com)

## MORPHEUS®

LOW ALLERGY



### INFORMATION FOR PEOPLE SUFFERING FROM HOUSE DUST MITE ALLERGIES

#### WHAT IS HOUSE DUST?

No two homes produce the same kind of house dust; in fact it will even differ between rooms. House dust normally consists of human and animal hair and skin cells, textile fibres, bacteria and mould, algae and dust mites. Each of these components may trigger an allergy but most people who suffer an allergic reaction to house dust are affected by dust mites and their excrement.

#### THE MITE

Mites have shared our homes for thousands of years. They are relatives of the spider, are around 0.3 mm long and cannot be seen with the naked eye. They feed on shed animal and human skin, multiply very quickly and produce around two thousand times their own bodyweight in excrement in their short lives. Since around 1964, we have known that it is this excrement that contains the allergens responsible for house dust mite allergy.

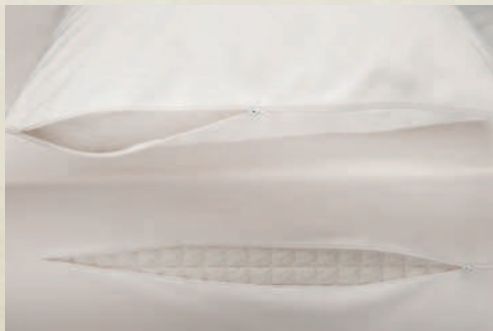
#### THE PREFERRED ENVIRONMENT

House dust mites like a warm, damp and dark environment. Temperatures of between 20 and 30 °C and a relative humidity of 65 to 80 % are ideal for them. Carpets, upholstered furniture and beds are where you will commonly find these mites, so it is these areas that require treatment, i.e. regular and thorough cleaning.

#### BED AND BEDDING TIPS

House dust mites and most importantly their allergenic excrement can only be eliminated through regular and radical removal. Chemical treatments are not recommended for bedding as it comes into contact with the body. The only solution for sufferers is to regularly wash all bedding at as high a temperature as possible (95 °C) to effectively kill any mites present. Mattresses should be fitted with a special cover which can also be washed.

#### THE DUST MITE BARRIER COVERS



with zip for a quick and easy cover change





Home & Yacht Linens and Interiors.  
[www.finestbedlinen.com](http://www.finestbedlinen.com)

# MORPHEUS®

## LOW ALLERGY



### THE MORPHEUS®-COLLECTION

As a natural plant source material cotton is a serious option for those who seek alternatives to chemical-based fillings and cannot use animal-based fillings such as down, cashmere, wool or silk.

#### THE QUILT

As such, the cotton duvet becomes an increasingly popular alternative to traditional bedding, as cotton offers high moisture absorbency and makes an extremely light comfortable duvet. Naturally, we use only the finest pure cotton for filling and combed Egyptian cotton satin for the casing, but at BRINKHAUS our technicians go even further. Although when washed at 60 °C most allergens are removed, the MORPHEUS® range of products can be laundered from time to time at temperatures up to 95 °C for even greater control of the sleeping environment. Moreover, the quilt is designed as a medium-light summer weight quilt.

#### THE MATTRESS PAD

The MORPHEUS® Cotton 95 °C mattress pad is an extremely comfortable addition to the top of the mattress and fits underneath the bottom sheet. The pad is of deep rectangular quilted cotton in a fine cotton casing and is fitted with wide elastic corner straps to quickly and easily fit over the mattress itself. The soft natural absorbent cotton adds extra luxury and comfort to the mattress top and like the MORPHEUS® Cotton 95 °C quilt the pad is designed to be laundered at high temperature to remove allergens. As well as providing natural comfort for allergy control, the pad will add additional softness and comfort to an ageing or hard mattress. When laundering the mattress pad it should be reshaped whilst still damp. Initially it may seem as though it has shrunk but will expand to the correct size during use.

#### DUST MITE BARRIER

The special MORPHEUS® bedding is for people who suffer from house dust mite allergies and all those people who react sensitively to environmental influences. These casings are particularly suitable for the modern bedding requirements of people suffering from house dust mite allergies. They need covers made of a particularly dense 100 % cotton fabric. An additional mechanical finishing ensures that penetration by house dust mites is out of the question. As a result, an additional coating is not necessary. The dust mite barrier completely encloses the covers. In this connection, a select combination of materials permits regular washing at those temperatures, which ensure that house dust mites and other microorganisms are effectively killed off. It can be washed at 95 °C and tumble dried for extra hygiene control.

#### SPECIFICATIONS

Quilt	Casing	fine satin in 100 % Egyptian long staple cotton, medicott® treated, TC 218
	Filling	100 % cotton fibre
	Design	equipped with durable nickel-free metal press studs
Mattress Pad	Casing	cambric in 100 % cotton, TC 163
	Filling	100 % cotton fibre
	Design	equipped with elastic corner straps
Pillow	Casing	fine satin in 100 % Egyptian long staple cotton, medicott® treated, TC 218
	Filling	Rhombo-Fill®, polyurethane sticks
	Design	quilted outer cover with zipper
Washable	up to 95 °C	
Colour	white	
Covers	Casing	100 % Egyptian long staple cotton twill, medicott® treated, downproof, TC 249
	Design	
Washable	up to 95 °C	
Colour	white	



# MORPHEUS®

LOW ALLERGY

	Product	Product Code	Size in cm	Filling Weight
	<b>COTTON 95 °C QUILT</b> 3.5 TOG LIGHT	59228	100 x 135*	300 g
	QUILTED SQUARES	51710	135 x 200	600 g
	APPROX. 220 G/M <sup>2</sup>	51760	155 x 200*	690 g
		51761	155 x 220*	760 g
		51711	200 x 200	900 g
		51762	200 x 220*	980 g
		51712	230 x 220	1,100 g
		51763	240 x 220*	1,150 g
		51713	260 x 220	1,250 g
	<b>COTTON 95 °C MATTRESS PAD</b>	51714	90 x 200	850 g
	QUILTED SQUARES	51716	90 x 190	900 g
	APPROX. 520 G/M <sup>2</sup>	51717	140 x 190	1,500 g
		51718	150 x 200	1,600 g
		51715	160 x 200	1,700 g
		51719	180 x 200	1,900 g
		51743	200 x 200	2,100 g
	<b>COTTON 95 °C PILLOW</b> MEDIUM	51052	40 x 60	200 g
		51080	50 x 70*	520 g
		51079	50 x 75	550 g
	<b>PAIR OF PILLOW COVERS</b> DUST MITE BARRIER	38811	40 x 60	
	WITH ZIPPER	38930	50 x 70*	
		38897	50 x 75	
		38916	65 x 65	
		38915	50 x 90	
	<b>DUVET COVER</b> DUST MITE BARRIER	38810	100 x 135*	
	WITH ZIPPER	38804	135/140 x 200	
		37105	155 x 220*	
		38807	200 x 200*	
		37106	230 x 220*	
		38913	240 x 220	
		38914	260 x 220	
	<b>MATTRESS COVER</b> DUST MITE BARRIER	38828	90 x 190/200	
	FOR MATTRESS HEIGHT 20 - 24 cm	38830	140 x 190/200	
	WITH ZIPPER	38832	160 x 200	
		38854	180 x 200	
	<b>MATTRESS COVER</b> DUST MITE BARRIER	37107	90 x 190/200	
	FOR MATTRESS HEIGHT 25 - 29 cm	37108	140 x 190/200	
	WITH ZIPPER	37109	150 x 200	
		37110	160 x 200	
		37111	180 x 200	
	<b>MATTRESS COVER</b> DUST MITE BARRIER	38264	70 x 140*	
	FOR MATTRESS HEIGHT 14 - 20 cm	37112	80 x 200*	
	WITH ELASTIC BAND	37113	90 x 190/200	
		38169	100 x 200*	
		38265	120 x 200*	
		38247	140/150 x 190/200	

\*available to special order



# TEXTILE FIBRE

*Do you lead an eventful life? Place high value on comfort and hygiene?  
Ranging from cosy duvets to duvets with elaborate functionality,  
the selection of textile fibres will surprise you. Easy to launder and  
absolutely cosy. The high-quality all-round talent for individual sleep  
requirements. The custom-fit corners guarantee a perfect fit.*

Home & Yacht Linens and Interiors  
[www.finestbedlinen.com](http://www.finestbedlinen.com)







Home & Yacht Linens and Interiors.  
[www.finestbedlinen.com](http://www.finestbedlinen.com)

# CLIMASOFT®

WITH OUTLAST®



## THE CLIMASOFT® WITH OUTLAST® COLLECTION

The innovative Outlast® technology was originally developed for the NASA. It proactively regulates the balance between temperature and humidity. Temperature variations beneath the quilt are indirectly balanced thanks to the patented Outlast® micro-capsules. Surplus body warmth is both absorbed and stored to prevent overheating. This results in a constant sleeping temperature and improved sleep. The casing perfectly combines the natural capacity of cotton – rapid conduction of humidity – with the ability of the Outlast® PCM molecules in the filling to store warmth.



### SPECIFICATIONS

Quilt	Casing	fine 100 % Egyptian long staple cotton batiste, TC 238, with special aloe vera finishing
	Filling	High-grade Outlast® fibre, 100 % polyester
	Design	with edging band
Mattress Pad	Casing	100 % Egyptian long staple cotton cambric, TC 192 with interliner on upper side: Outlast® coated non-woven
	Filling	Thermofill® Plus, 100 % polyester hollow fibre
	Design	equipped with elastic corner straps
Pillow	Casing	100 % Egyptian long staple cotton cambric, TC 192, with interliner on both sides: Outlast® coated non-woven
	Filling	Thermofill® Plus, 100 % polyester hollow fibre balls
	Design	quilted outer cover with zipper, PP non-woven inner pillow with zipper
Washable	up to 60 °C	
Colour	white	



#### QUILT 3.5 TOG LIGHT

CENTRAL DIAMOND WITH OUTER RIM  
APPROX. 150 G/M²

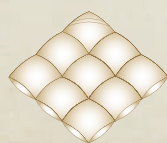
Product Code	Size in cm	Filling Weight
59053	135 x 200	400 g
59064	155 x 200*	460 g
59061	155 x 220*	510 g
59054	200 x 200	600 g
59062	200 x 220*	660 g
59055	230 x 220	750 g
59068	240 x 220*	790 g
59056	260 x 220	850 g



#### QUILT 7.5 TOG MEDIUM

CENTRAL DIAMOND WITH OUTER RIM  
APPROX. 300 G/M²

Product Code	Size in cm	Filling Weight
59057	135 x 200	800 g
59069	155 x 200*	930 g
59070	155 x 220*	1,020 g
59058	200 x 200	1,200 g
59071	200 x 220*	1,320 g
59059	230 x 220	1,500 g
59072	240 x 220*	1,580 g
59060	260 x 220	1,700 g



#### MATTRESS PAD

QUILTED SQUARES  
APPROX. 200 G/M²

Product Code	Size in cm	Filling Weight
51749	90 x 190	340 g
51750	140 x 190	530 g
51751	150 x 200	600 g
51752	160 x 200	640 g
51753	180 x 200	720 g

#### PILLOW MEDIUM

Product Code	Size in cm	Filling Weight
53108	50 x 75	670 g
53110	50 x 90	800 g
53111	50 x 70*	600 g
53109	65 x 65	750 g





Home & Yacht Linens and Interiors.  
[www.finestbedlinen.com](http://www.finestbedlinen.com)

Brinkhaus

Brinkhaus

# BAUSCHI® LUX



## THE BAUSCHI® COLLECTION

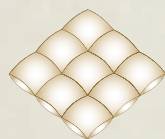


Polyester fibres are the man-made alternative to natural fillings for those who prefer, or who must use, synthetic fillings. At BRINKHAUS, we use premier Thermofill® fibre, which is a top-quality supple hollow polyester filament; this is both soft and has good insulation properties.

This top quality polyester filling is encased in the finest quality cotton satin casing, making the items soft and beautifully supple, a real luxury item. Machine washable, this is a superb example of the art of BRINKHAUS applied to a man-made filling – luxury at its best.

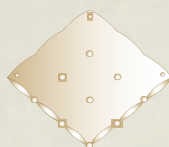
## SPECIFICATIONS

Casing	Quilt / Pillow	fine satin in 100 % Egyptian long staple cotton, medicott® treated, TC 218
	Side Sleeper Pillow	fine satin in 100 % Egyptian long staple cotton, medicott® treated, TC 380
Filling	Quilt	Thermofill®, 100 % polyester hollow fibre
	Pillows	Thermofill® Plus, 100 % polyester hollow fibre balls
Design	Quilt	equipped with durable nickel free metal press studs
	Side Sleeper Pillow	with twin piping, with zipper
	Pillow	with satin piping, with zipper
Washable	up to 60 °C	
Colour	white	



### POLYESTER QUILT 4.5 TOG LIGHT QUILTED SQUARES

Product Code	Size in cm	Filling Weight
56220	135 x 200	400 g
56208	155 x 200*	460 g
56209	155 x 220*	510 g
56222	200 x 200	600 g
56210	200 x 220*	660 g
56223	230 x 220	750 g
56211	240 x 220*	790 g
56224	260 x 220	850 g



### POLYESTER QUILT 7.0 TOG MEDIUM CIRCLE QUILTING

Product Code	Size in cm	Filling Weight
56305	135 x 200	650 g
56212	155 x 200*	750 g
56213	155 x 220*	820 g
56307	200 x 200	950 g
56214	200 x 220*	1,050 g
56308	230 x 220	1,200 g
56215	240 x 220*	1,250 g
56309	260 x 220	1,400 g



### POLYESTER QUILT 10.5 TOG WARM DIAMOND QUILTING

Product Code	Size in cm	Filling Weight
55512	135 x 200	1,000 g
56216	155 x 200*	1,150 g
56217	155 x 220*	1,260 g
55514	200 x 200	1,500 g
56218	200 x 220*	1,630 g
55515	230 x 220	1,850 g
56219	240 x 220*	1,960 g
55516	260 x 220	2,100 g

### SIDE SLEEPER PILLOW FIRM BOX CONSTRUCTION

Product Code	Size in cm	Filling Weight
53514	50 x 75	820 g
53515	50 x 90	990 g
53513	50 x 70*	750 g

### PILLOW FIRM

Product Code	Size in cm	Filling Weight
74651	50 x 75	800 g
74653	50 x 90	1,000 g
50026	50 x 70*	700 g
74652	65 x 65	900 g





Home & Yacht Linens and Interiors.  
[www.finestbedlinen.com](http://www.finestbedlinen.com)



# PILLOWS AND CUSHIONS

*... are cosy and gently support the head and neck.*

*They are an important contribution to restful sleep  
and can actively prevent tension as they support  
the head and neck perfectly to promote an ergonomic  
sleeping position - for high demands in sleeping  
comfort and restful nights.*

Home & Yacht Liners and Interiors.  
[www.finestbedlinen.com](http://www.finestbedlinen.com)



Home & Yacht Linens and Interiors.  
[www.finestbedlinen.com](http://www.finestbedlinen.com)

## SAPPHIRE



### THE COMFORT PILLOW

For detailed information see page 10

Product	Product Code	Size in cm	Filling Weight
<b>COMFORT PILLOW FIRM</b>	28260	50 x 75	800 g
<i>WITH 2 INNER BAFFLES</i>	28261	50 x 90	1,000 g
	28241	50 x 70*	730 g

## JADE



### THE SIDE SLEEPER PILLOW

This is a natural, beautiful, soft and luxurious pillow with an outside baffle edge that is designed to allow the mature full-sized goose down filling to give loft and support up to the outermost edge of the pillow. This allows the head to rest in the centre of the pillow whilst the baffle edge nestles against the neck and shoulder for excellent comfort, especially for those who prefer to sleep on their side.

#### SPECIFICATIONS

Casing	finest 100 % Egyptian long staple cotton twill, medicott® treated, downproof, TC 300
Filling	new white European goose down, class I, DIN EN 12934, 80 % down
Design	with twin piping
Washable	up to 60 °C
Colour	white

Product	Product Code	Size in cm	Filling Weight
<b>SIDE SLEEPER PILLOW MEDIUM</b>	28064	50 x 75	600 g
<i>BOX CONSTRUCTION</i>	28065	50 x 90	720 g
	28066	50 x 70*	560 g
	28067	65 x 65*	690 g

## PREMIER HUNGARIAN GOOSE DOWN



### THE CLASSIC PILLOW

Arguably the most widely-sold pillows from our product range, a must-have for anyone who loves the feeling of pure luxury and maximum sleeping comfort. The HUNGARIAN GOOSE DOWN PILLOW convinces due to a casing made of 100 % Egyptian long staple cotton twill and a filling consisting of new white Hungarian goose down.

#### SPECIFICATIONS

Casing	fine 100% Egyptian long staple cotton twill, medicott® treated, downproof, TC 234
Filling	new white Superior Hungarian goose down, class I, DIN EN 12934, 90 % down
Design	with satin piping
Washable	up to 60 °C
Colour	white

Product	Product Code	Size in cm	Filling Weight
<b>CLASSIC PILLOW MEDIUM</b>	27040	50 x 75	550 g
	27132	50 x 90	650 g
	27042	50 x 70*	510 g
	27041	65 x 65	600 g





## LUXURY TWIN



### THE 2-CHAMBER PILLOW

An innovation amongst comfort pillows – two different fillings have been combined into one pillow. The two halves are completely separated by a central layer of cotton which acts like a “hammock”. This enables the full benefit of the softer side to be enjoyed without sinking too far into the pillow, giving softness with support. The softer side provides excellent sleeping comfort whereas the firmer feather and down side gives the support. Use the firmer side to sit up to read in bed and sleep on the softer side. An ideal guest bedroom pillow – a soft or firm pillow to choose from in one pillow.

#### SPECIFICATIONS

Casing	fine 100 % Egyptian cotton twill, medicott® treated, downproof, TC 234		
Filling	soft side	new white superior Hungarian goose down, class I, DIN EN 12934, 90 % down	
	opposite side	new white European duck feathers and down, class I, DIN EN 12934, 70 % feathers / 30 % down	
Design	2-chamber pillow, with satin piping		
Washable	up to 60 °C		
Colour	white		



Product	Product Code	Size in cm	Filling Weight
2-CHAMBER PILLOW MEDIUM	28032	50 x 75	170 + 750 g
	28084	50 x 90	200 + 900 g
	20124	50 x 70*	160 + 700 g

## DOWN SURROUND



### THE 3-CHAMBER PILLOW

Made exactly as it is described, the DOWN SURROUND pillow enables BRINKHAUS craftsmen to bring together manufacturing know-how and ingenious skill to produce a new and very comfortable pillow. This has a central tubular core case filled with a feather and down mixture, which is surrounded by an 80 % goose down and 20 % feathers mix beneath the outer case thus giving real softness at the point of contact and yet “body” which comes from the central core mixture.

#### SPECIFICATIONS

Casing	fine 100 % Egyptian long staple cotton twill, medicott® treated, downproof, TC 234		
Filling	outer chambers	new white European goose down, class I, DIN EN 12934, 80 % down	
	inner chamber	new white European duck feathers and down, class I, DIN EN 12934, 85 % feathers / 15 % down	
Design	3-chamber pillow		
Washable	up to 60 °C		
Colour	white		



Product	Product Code	Size in cm	Filling Weight
3-CHAMBER PILLOW SOFT	21016	50 x 75	120 + 550 g
	21017	50 x 90	150 + 670 g
	21018	50 x 70*	115 + 510 g
	21019	65 x 65*	130 + 630 g
3-CHAMBER PILLOW MEDIUM	21049	50 x 75	120 + 720 g
	21466	50 x 90	150 + 900 g
	21054	50 x 70*	115 + 670 g
	21067	65 x 65*	130 + 800 g
3-CHAMBER PILLOW FIRM	21084	50 x 75	120 + 900 g
	21085	50 x 90	150 + 1,100 g
	21086	50 x 70*	115 + 840 g
	21092	65 x 65*	130 + 1,010 g

\*available to special order





Home & Yacht Linens and Interiors.  
[www.finestbedlinen.com](http://www.finestbedlinen.com)

# EVERYDAY PILLOWS AND CUSHIONS



## THE DOWN AND FEATHER PILLOWS

Here we have our collection of down and feather filled pillows for everyday use.

The head and sensitive neck region need a supporting and relieving pillow that masters the diverse stress in the night. The DUCK FEATHER AND DUCK DOWN PILLOW supports the head through a combination of elastic feathers and snuggly soft down. Only filling material with a high durability will master these permanent stresses. Our pillows, the BOUDOIR and FEATHER PILLOW, provide the excellent finishing touch to any bed ensemble for decorative purposes.

### SPECIFICATIONS

Duck Feathers and Duck Down Pillow	Casing	100 % cotton twill, medicott® treatment, down- and featherproof, TC 198
	Filling	new white European duck feathers and down, class I, DIN EN 12934, 85 % feathers / 15 % down
Boudoir Pillow	Casing	fine 100 % Egyptian long staple cotton twill, medicott® treated, downproof, TC 234
	Filling	new white European duck down, class I, DIN EN 12934, 80 % down
Feather Pillow	Casing	100 % cotton twill, medicott® treatment, down- and featherproof, TC 198
	Filling	new white European duck feathers, class I, DIN EN 12934, 100 % feathers
Design		with satin piping (except Feather Pillow)
Washable		up to 60 °C
Colour		white

Product	Product Code	Size in cm	Filling Weight
<b>DUCK FEATHERS AND DUCK DOWN PILLOW SOFT</b>	25091	50 x 70*	750 g
	25089	50 x 75	800 g
	25090	65 x 65	950 g
	25071	50 x 90	1,000 g
<b>BOUDOIR PILLOW</b>	28041	30 x 40	120 g
<b>FEATHER PILLOW</b>	28042	30 x 40	300 g
	25232	40 x 40	400 g





Home & Yacht Linens and Interiors.  
[www.finestbedlinen.com](http://www.finestbedlinen.com)

## EXQUISIT



### WOOL-FILLED PILLOW

For detailed information see page 22

Product	Product Code	Size in cm	Filling Weight
WOOL-FILLED PILLOW MEDIUM	56771	50 x 75	850 g
	56772	50 x 70*	800 g
	56773	65 x 65*	950 g

## MORPHEUS®

LOW ALLERGY



### COTTON 95 °C PILLOW

For detailed information see page 26

Product	Product Code	Size in cm	Filling Weight
COTTON 95 °C PILLOW MEDIUM	51052	40 x 60	200 g
	51079	50 x 75	550 g
	51080	50 x 70*	520 g

## CLIMASOFT®

WITH OUTLAST®



### CLIMASOFT® WITH OUTLAST® PILLOW

For detailed information see page 30

Product	Product Code	Size in cm	Filling Weight
PILLOW MEDIUM	53108	50 x 75	670 g
	53110	50 x 90	800 g
	53111	50 x 70*	600 g
	53109	65 x 65	750 g



# BAUSCHI® LUX



## THE BAUSCHI® LUX PILLOWS

For detailed information see page 32

Product	Product Code	Size in cm	Filling Weight
<b>SIDE SLEEPER PILLOW FIRM</b>	53514	50 x 75	820 g
<b>BOX CONSTRUCTION</b>	53515	50 x 90	990 g
	53513	50 x 70*	750 g
<b>PILLOW FIRM</b>	74651	50 x 75	800 g
	74653	50 x 90	1,000 g
	50026	50 x 70*	700 g
	74652	65 x 65	900 g

## GEL



## THE GEL NECK SUPPORT PILLOW

This pillow offers perfect anatomical positioning of the head and shoulders for those who sleep on their side and back. The combination of a temperature-variable viscoelastic core with a soft gel layer promises a positioning which fits the form of the upper cervical spine and relieves any pressure on the shoulder muscles. Body warmth is absorbed slowly by the gel, so a constant and pleasant temperature of the pillow core is ensured. An excellent moisture conduction results due to the modern net technology of the gel layer.

### SPECIFICATIONS

Casing	Double-ply polyamide of 45 % lyocell (Tencel®), 28 % polyamide, 25,5 % polyester, 1,5 % elastane
Filling	Memory foam core with gel layer on top
Design	with zipper
Washable	up to 60 °C
Colour	crème

Product	Product Code	Size in cm	Filling Weight
<b>GEL NECK SUPPORT PILLOW</b>	51055	36 x 60	

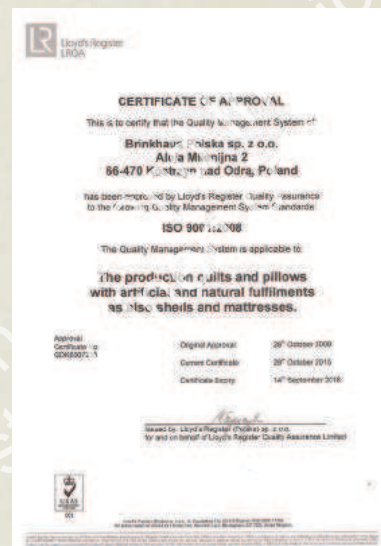
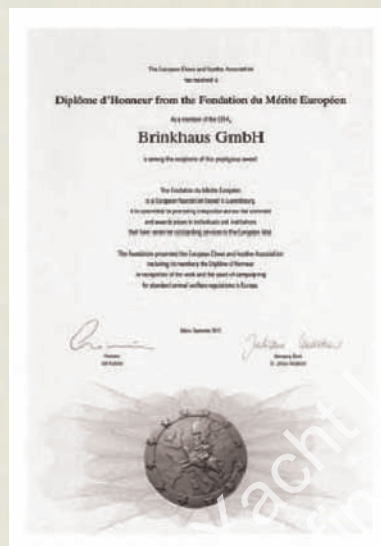


# CERTIFICATES

## THE COMMITMENT

The quality offered by the BRINKHAUS brand is based on carefully chosen materials combined with modern production methods. Our range of quilts and pillows stands for first-class sound sleep.

Our guarantee label underlines the high quality of our BRINKHAUS brand products by describing the components they are made of and the benefits they offer. Every filling boasts 100 % BRINKHAUS quality. This is our guarantee that our products will meet even the most stringent of quality requirements.





## SEALS OF QUALITY



### ÖKO-TEX

Product identification with the label "Confidence in Textiles" and the connected proven safety of textile products is an additional sales argument which surveys have found to be more important to consumers than price, functionality or brand. Widespread use and customer awareness of the OEKO-TEX® Standard 100 contribute to the OEKO-TEX® label now having a status similar to that of a brand name and being actively requested by consumers. Marking products with the OEKO-TEX® label therefore provides all textile and clothing manufacturers with valid certificates with an effective way of drawing more attention to their products. Without visible labels, consumers are not in a position to assess the human ecological quality of the textiles.



### MEDICOTT®

The spores of mould and mildew are known to be a cause of allergies. Their damaging influence can be combated with a special process technology. We have therefore treated the cloth for our quilts and pillows using the Medicott® process. When the products are cleaned correctly, this process inhibits the growth and development of mould and mildew – even when the product is wet for some time. The process does not use fungicides, microbicides or bactericides. It preserves the cotton fibre and supports its durability.



### NOMITE®

The NOMITE® mark indicates that a product is suitable for house dust mite allergy sufferers: because down- and feather-filled products offer excellent thermal and climatic conditions for humans (rapid warming up when one is sleeping, rapid decrease in humidity when the bedding is aired), they provide a very poor habitat for house dust mites, which rely on high humidity to live. The tight weave of the down- and featherproof fabric acts as a barrier, preventing the mites from passing through, and therefore offers additional protection – so that those who suffer from house dust allergies or asthma can also enjoy the natural comfort afforded by down and feather bedding. This has been demonstrated by scientific research.



### TRAUMPASS

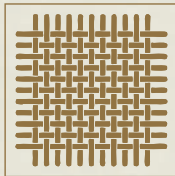
Traumpass is a quality seal used for bedding, sleeping bags and clothing that are filled with down and feathers. Products marked with this seal must be filled with down and feathers from the two highest classes I and II in accordance with EN 12934. In addition, all raw materials used in Traumpass products are by-products from meat production and thus sourced exclusively from slaughtered animals. Companies who use the seal on their products have agreed to adhere to this specification. The label "Traumpass DIN tested", which is sewn into every product, contains an individual lot-specific testing number that enables the manufacturing company to be identified. The origin of the down and feathers used for filling can be traced back via documents such as delivery notes, invoices, tax and import certificates, ending at the slaughterhouse from which the raw materials are sourced. This guarantees that products with the Traumpass seal do not contain material from living animals. Checks to ensure that the user of the seal follows these guidelines are carried out in regular audits of the companies by the certification organisation DIN CERTCO, Berlin.

# QUALITY INDEX

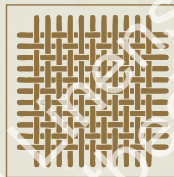
## THE FABRIC

Which weave to use?

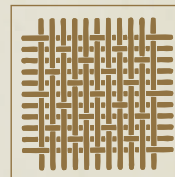
In considering casings and weaves throughout our brochure we refer to thread count. Thread count is calculated by the addition of the number of threads in both directions of the weave, in a one inch direction from a given point. Thus higher thread counts mean finer weaves. As a guide to thread count, we can find bed linen that sometimes carries the term “percale”. Nowadays, this is taken to mean weaves where the thread count is a minimum of 180, our casings are very much higher thread counts than this. Part of our art at BRINKHAUS is knowing which weave is particularly suited for the type of filling it will hold. Twill, for example, is a highly versatile weave. It allows for an extremely fine high density thread count for superior strength. In addition, the softer and thicker weft yarn (those across the width) are on the inside, and therefore in contact with the filling. Over time, the fabric becomes matted through use and therefore increases its density. Cambric, a classic linen weave, marries the finest cotton yarns to extreme lightness. We have found this combination ideal for pure down or feather and down mixtures, the finest being a “batiste”. Satin weave takes its name from its effect. The high count of warp threads gives a luxurious shiny right side. Because this takes more yarn to achieve, it is an expensive weave. You will find examples of all three in our collection.



CAMBRIC / BATIST



TWILL



SATIN

## THE FILLING

Which is the best for me?

There is no easy answer to this question. It depends principally on individual taste – warmth required, type of sleeper, ambient temperature as well as climate. Premier goose down is the lightest, giving freedom to move and turn without disturbing rest. Cashmere, camel hair, silk, wool and cotton are other excellent natural fillings that we use. They are heavier than down but in the same way they promote air and moisture movement and respond to body temperature changes. Of these, silk is uniquely body responsive; wool provides warmth with high absorbency to draw off moisture. Cotton is also absorbent and as a natural plant source filling, it is a good option for allergy sufferers, polyester is the man-made alternative in this respect. However, whatever your final choice may be, the same care, attention and finish is applied to every duvet that carries the BRINKHAUS name.

## THE TOG RATE

Which “TOG-Rate” should I choose?

The TOG expressed as a number, acts as a guide to the insulation property; more accurately it is the measure of the thermal resistance of a duvet construction. The higher the number, the more the duvet holds heat. For natural fillings other factors such as climate, humidity, ambient temperature and individual preferences are equally important. We also indicate other factors such as weight and warmth. However, it is important to note that other individual factors must be balanced in your final decision.



#### **DOWN**

The perfect duvet filling, has been used for centuries now. This little miracle of nature, which has countless tiny air pockets between its individual hairs, provides excellent heat insulation and absorbs moisture, immediately transporting it out to the surrounding air. So your body stays warm and dry.

#### **CASHMERE**

From time immemorial it has been synonymous with the most precious and fine natural animal hair. It comes from the Cashmere goat which lives in the Central Asian highlands of China and Mongolia. It is characterised by its special softness and smoothness. Cashmere hair acts as a climate regulator and assures excellent sleeping comfort.

#### **CAMEL HAIR**

Camel hair has good insulating properties and is more flexible and lighter than wool. Thanks to its outstanding ability to regulate moisture, the duvet is ideal for sleepers who perspire easily. The camel hair duvet is not suitable for people who often suffer from a dust mite allergy.

#### **SILK**

Silk is 100 % natural, silk has an absorption of about 30 % of its own weight and silk has the special characteristic of immediately being able to release the absorbed moisture into the air. Temperature differences in the body are absorbed by the silk and it is unique in being able to adapt to the body's temperature changes. Silk is derived from the cocoon of silk moth the caterpillar and thus an animal fibre.

#### **WOOL**

Pure new sheep's wool is one of the oldest hairs used by man. It can absorb up to 30 % of its own weight in moisture without ever feeling damp. At the same time, it is able to quickly release this moisture into the surrounding air. So, you get a warm and cosy sleeping environment any time of the year.

#### **COTTON**

One of the oldest agricultural crops known to man is also ideal for use as a quilt filling material. It stands out thanks to its excellent capacity for absorbing moisture. However, it does not store this moisture; rather, it quickly releases it into the surrounding air. The result is a pleasant and dry sleeping environment. In addition, it is very easy to care for – washable up to 95 °C – and suitable for people with dust allergies.

#### **MAN-MADE SYNTHETIC FIBRE**

Duvets and pillows filled with modern textile fibres are functional, incredibly easy to care for and extremely hygienic, whilst also being cuddly soft and lightweight. As such products are washable at up to 60 °C or 95 °C and are suitable for tumble-drying, they are particularly highly recommended for people with dust allergies.



*Brinkhaus*

**BRINKHAUS GMBH**

Vennweg 22  
46395 Bocholt  
Germany

TEL. + 49 2871 21970 - 0  
FAX + 49 2871 21970 - 29

info@brinkhaus.de  
www.brinkhaus.de

Home & Yacht Linens and Interiors.  
www.finestbedlinen.com